

Before installation download the complete manual and read all instruction:

Bevor Sie mit der Montage anfangen, laden Sie bitte komplette Montageanleitung herunter und lesen Sie sorgfältig durch.:

Avant de commencer l'installation, télécharger le manuel complet et le lire attentivement:

Před začátkem montáže si stáhněte kompletní manuál a důkladně jej prostudujte:

<http://door-documents.com/en/installation-manual-industrial-door-sl>



1
2" = 81
3" = 95

2" = W+162
3" = W+190

a = b

C-PROFIL

1.1

1.2

1.3

1.4

F1

2

2.1

2.2

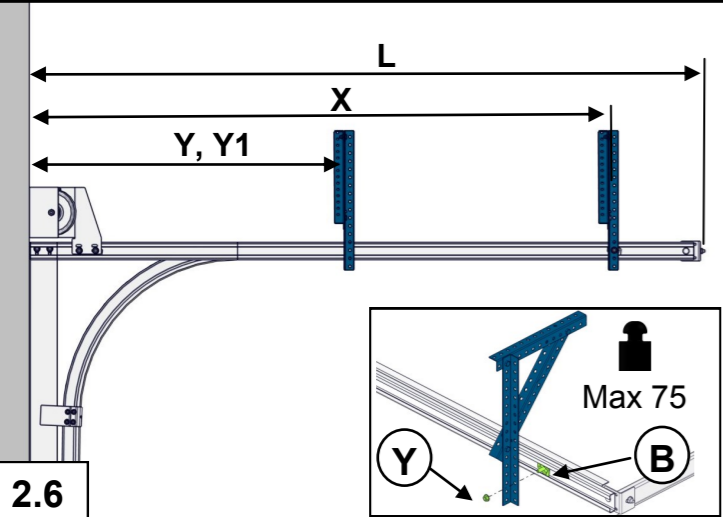
2.3

Max 18 Nm

2.4

2.5

C-PROFIL



L ≤ 3000 mm	
X	X = H
L > 3000 mm < L ≤ 4500 mm	
X	X = H
Y	Y = 1/2 X
L > 4500 mm	
X	X = H
Y	Y = 1/3 X
Y1	Y1 = 2/3 X

Max 18 Nm

Max 18 Nm

Y

F1

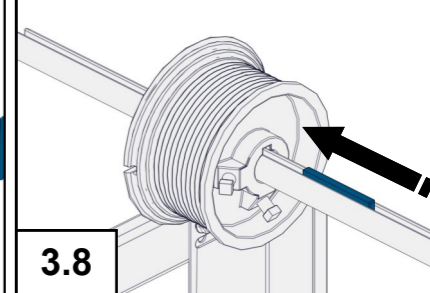
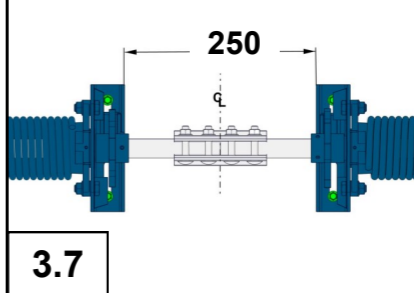
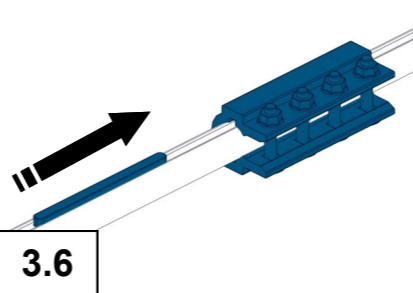
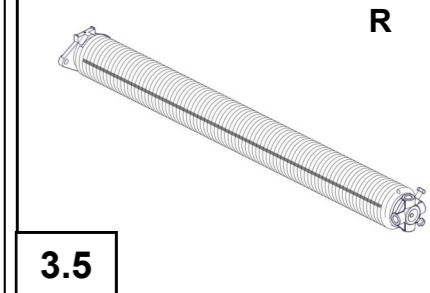
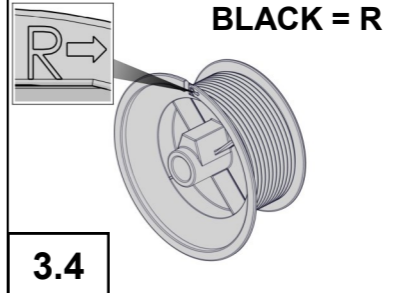
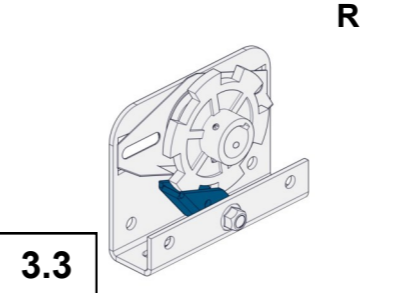
2.7

2.8

3

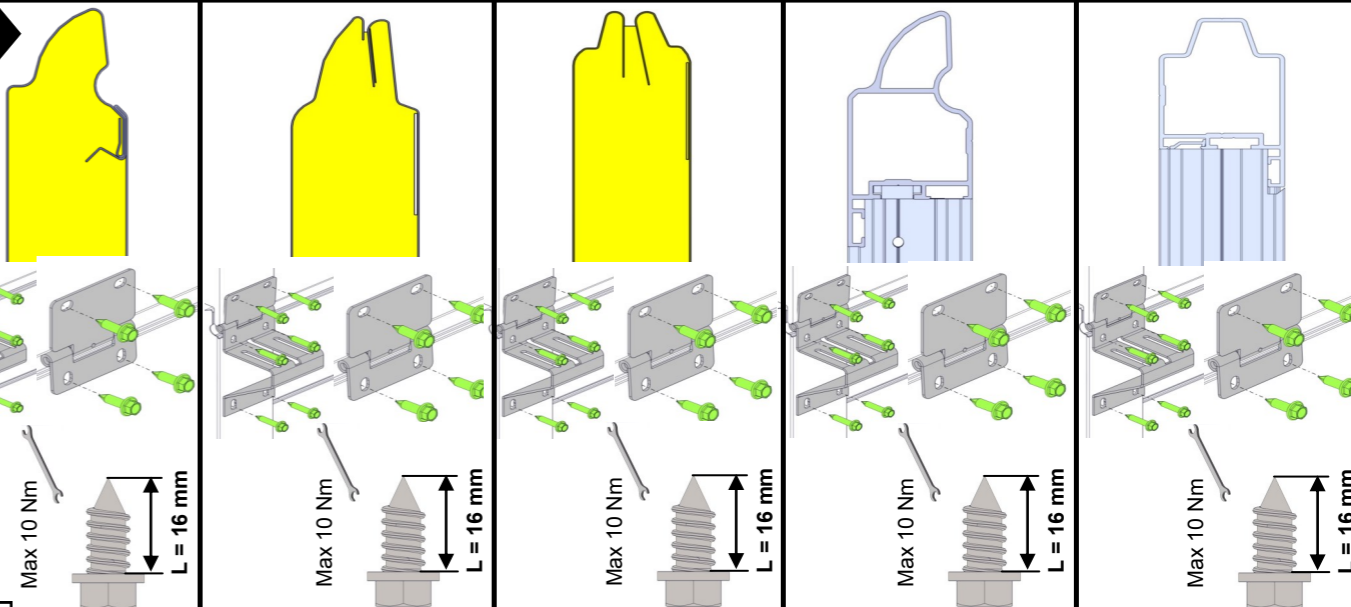
3.1

3.2



4

4.1



4.2 **6x** **E**

4.3 **4x** **C**

4.4

OPTION **5 mm**

OPTION **7,5 mm**

4.5 **1** **2** **3**

4.6 **Min 60 mm**

4.7 **4.8** **Max 12 Nm**

4.9 **4x** **C**

4.10 **4x** **C**

4.11

OPTION **D**

4.12

4.13 **X** **1/3 X**

4.14 **E**

6
5
4
3
2
1

5

5.1 **5.2** **Max 12 Nm**

5.3

5.4 **5.5** **a = 100 mm** **a**

5.6

5.7 **5.8** **5.9** **5.10**

6

6.1 **6.2** **6.3**

7

7.1 **2x** **A** **X** **φ 6,5 mm**

7.2

7.3 **45 - 60 mm**

